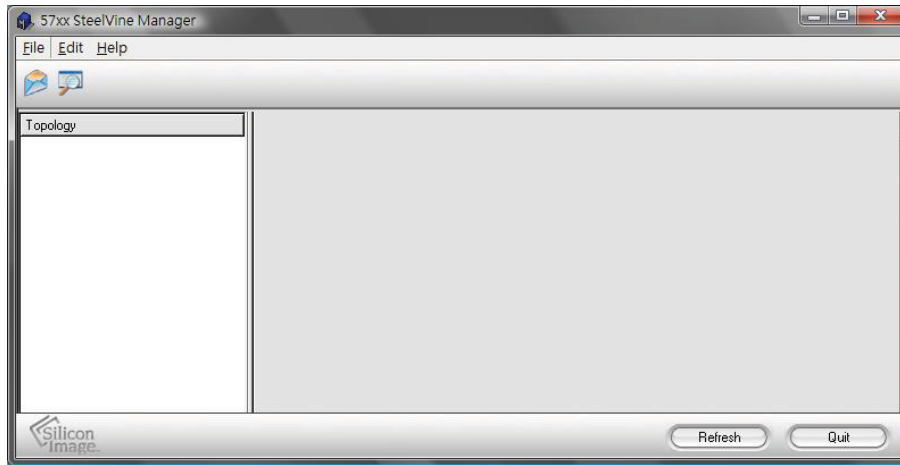
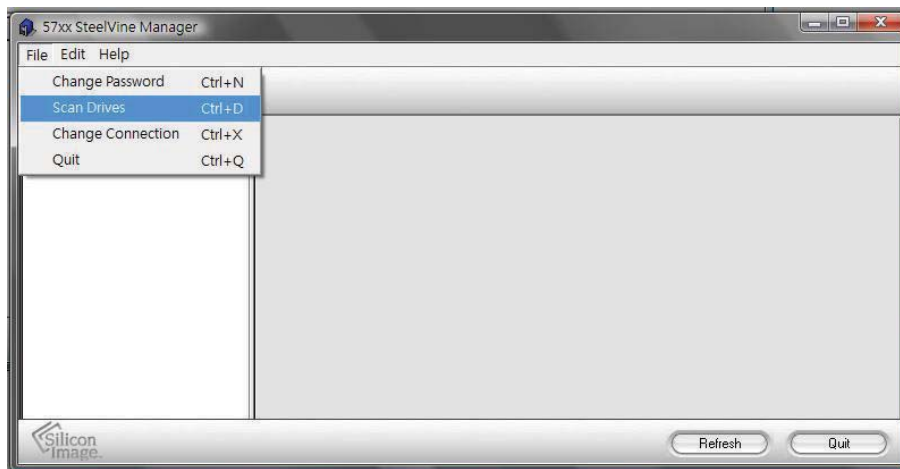


download the SteelVine Manager from Siliconimage website
http://siliconimage.com/docs/57xxSteelVine_V5.1.24B.zip
<http://www.siliconimage.com/support/searchresults.aspx?pid=105&cat=24>

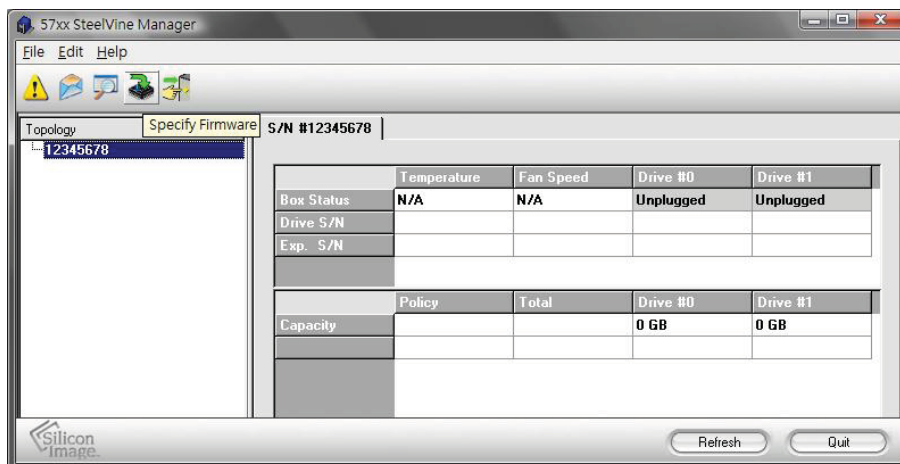
1. after install 57xxSteelVine Manager, run the application



2. connect the unit with a computer via USB connection, then click scan drives



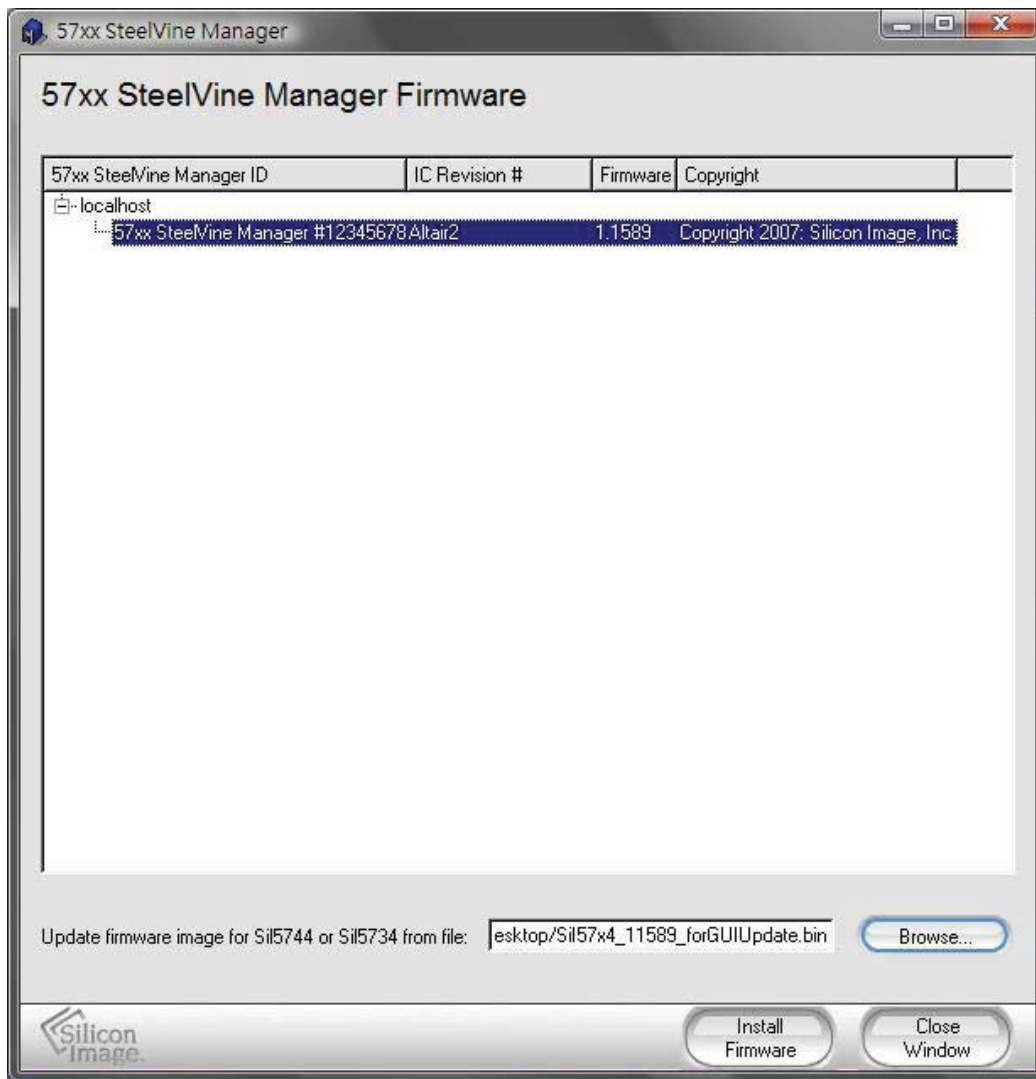
3. select "Specify Firmware" to update the firmware.



4. enter password: admin



5. select the version of firmware that needs to be updated.



After finished, select restart later on the pop out message and turn the unit off and turn it on again.